

DAUB CALAMUS

Anatomy of a Stroke



All presets named **Calamus** are special tools designed to create a very analog result.

To reach this kind of ink rendering only **black** is allowed, since colours are not yet supported.

For best results I suggest to set **layer** blending mode to Multiply.

USAGE TIP

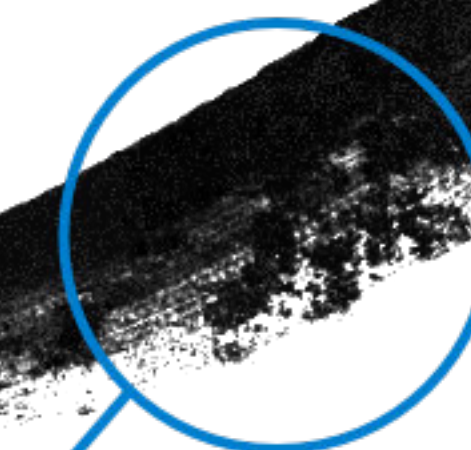
Colours usage is possible turning on Color Overlay (Screen) via Layer FX.



Fx > Color Overlay (Screen Mode)



Sample stroke
DAUB Calamus Mad



Seamless **Support** Texture
16Mpx resolution 16bit per channel



Seamless **Paper** Texture
16Mpx resolution 16bit per channel